

Emergency Shelter Coordinator Training
Capacitación de Coordinadores del Sector Refugio de Emergencia

Information Management - Yogyakarta Earthquake 2006

Manejo de la Información - Yogyakarta Terremoto del 2006

ESC B2 Training Panama June07



Session Overview
Vista General de la Sesión

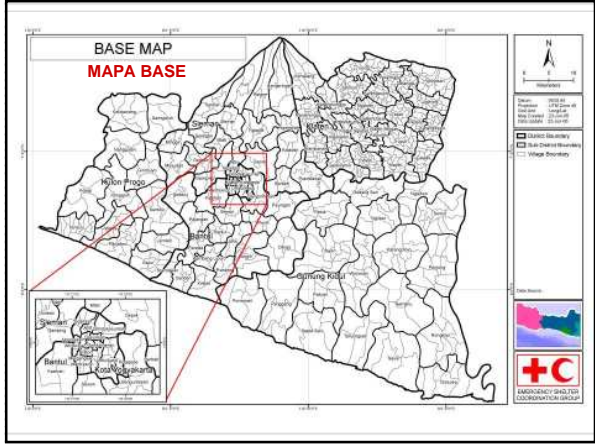
Understand the Emergency Context	Comprender el contexto de la emergencia
Analyse 'Cluster Capacity' and WHO, WHAT, WHERE	Analizar la 'Capacidad de Agrupaciones Sectoriales' y QUIEN, QUE, DONDE
Track the Progress of the Cluster and identify Gaps	Controlar el progreso de la Agrupación Sectorial e identificar carencias
Reporting Findings	Reportar las conclusiones
Questions	Preguntas

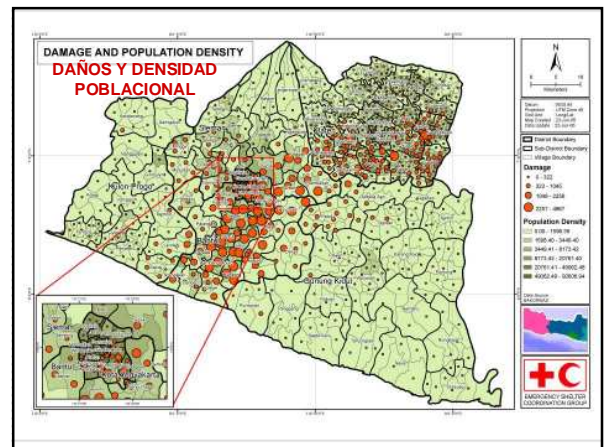
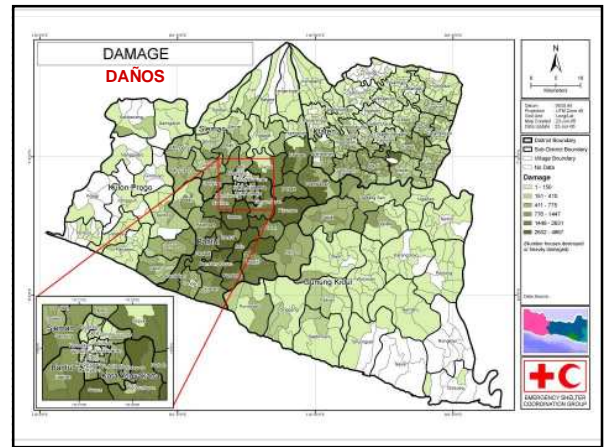
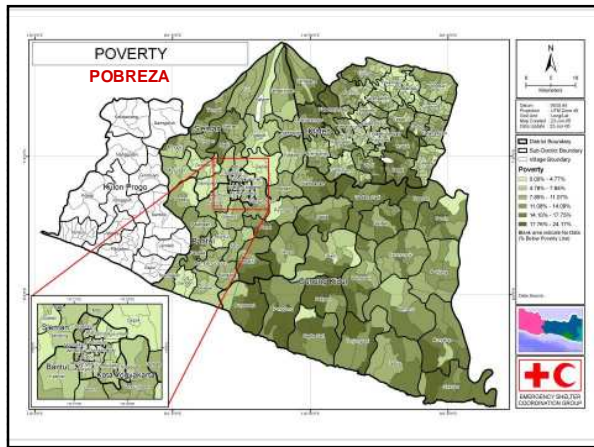
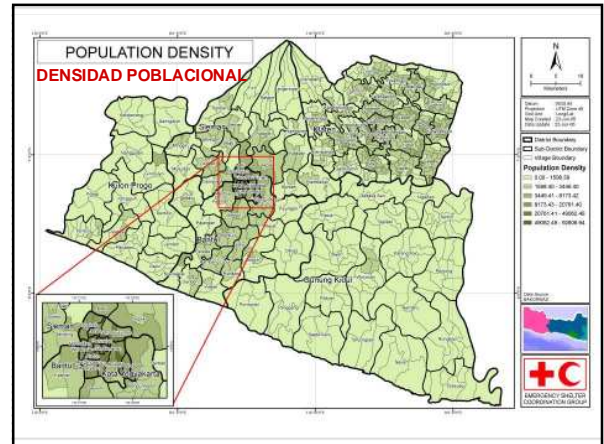
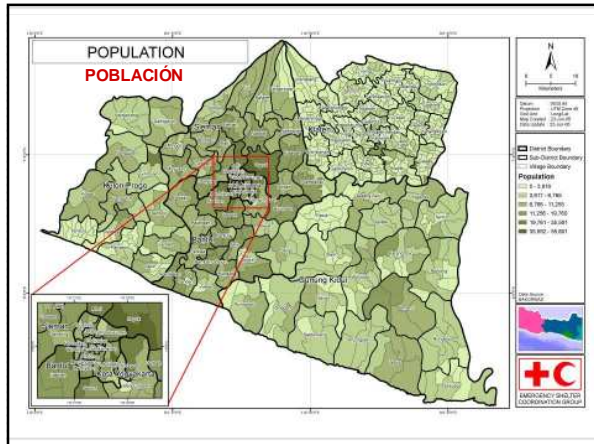
ESC B2 Training Panama June07

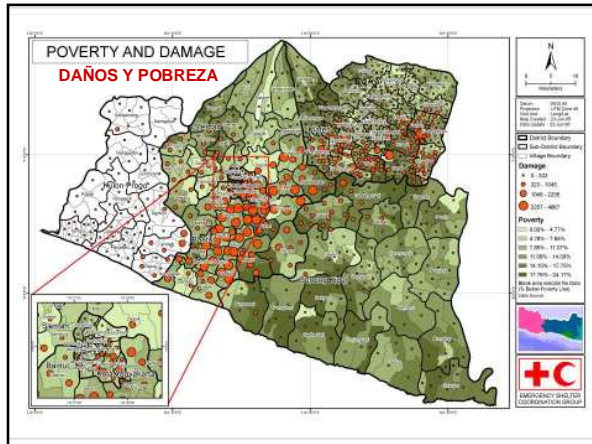
Understanding the emergency context:
Comprendiendo el contexto de la emergencia:

Before Emergency	Antes de la Emergencia
Demographics/Population	Demografía/Población
Vulnerabilities	Vulnerabilidades
Geopolitical Boundaries	Fronteras geopolíticas
+	+
Impact of Emergency	Impacto de la Emergencia
Affected area	Zona afectada
Damage	Daño
Households at Risk	Familias en riesgo

ESC B2 Training Panama June07







Cluster Capacity: WHO, WHAT and WHERE:

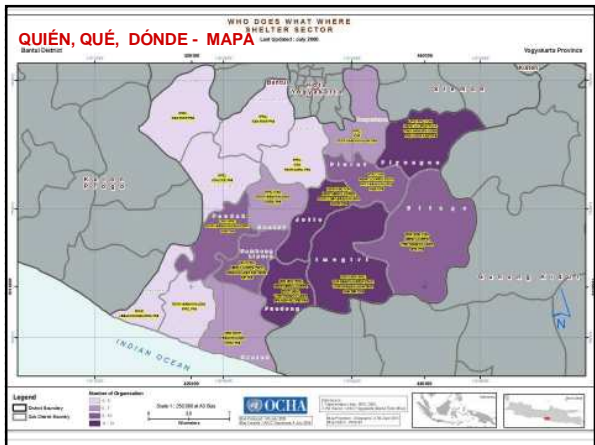
Capacidad de la Agrupación Sectorial: QUIEN, QUE, DONDE:

1 Which agencies are active	1 ¿Cuáles son las agencias activas?
2 What kind of programs are they operating	2 ¿En qué clase de programas se están especializan?
3 Where are they planning on implementing	3 ¿Dónde están planeando implementar?
4 When are they going to implement	4 ¿Cuándo van a implementar?

ESC B2 Training Panama June07

QUIÉN, QUÉ, DÓNDE - MATRIZ

PROVINCE / PROPINSI	DISTRICT / KABUPATEN	SUB-DISTRICT / KECAMATAN	VILLAGE / DESA	Remaining Emergency Shelter required	Households served	Baseline Households (Total and Target)	Coverage by Distribution (Total and Target)	Agency responsible for shelter	Active Agencies
Yogyakarta	Serihi	Siring Liris	Wajirobo	1410	1714	3000	57.0%	DFPM	PRICPM, Dufem/AMU 8
			Skikanan	2883	289	2564	8.1%	International Medical Corps, Dufem/AMU 8	
			Somberejo	3884	583	3370	24.3%	PRICPM, International Medical Corps, Dufem/AMU 8, World Vision	
	Sempayan	Sempayan	Sempayan	2630	188	2818	4.6%	PRICPM, JRS	
			Sekeloa	1300	0	1300	0.0%	PRICPM	
			Ngayan	430	42	478	8.8%	PRICPM	
			Saradan	88	1740	1831	95.1%	ASB, PRICPM	
			Puloco	1800	588	2388	24.6%	DFPM, PRICPM, Dufem/AMU 8	
			Singoran	380	18	398	0.5%	DFPM	
	Pantaran	Pantaran	Pantaran	1833	42	1875	2.3%	PRICPM	
			Makutan	1600	870	2470	35.0%	DFPM, PRICPM, Transcare Singapore	
			Simal	1174	1564	2531	61.8%	DFPM, PRICPM, Dufem/AMU 8	
	Pakelara	Pakelara	Pakelara	3107	43	3214	1.3%	DFPM, PRICPM, Dufem/AMU 8	
			Pegan Harjo	1300	0	1314	0.6%	DFPM, JRS	
			Sedodan	1230	80	1301	4.7%	DFPM, AMU 4	
			Toroggan	2600	580	3188	18.5%	PRICPM, Dufem/AMU 8	
	Mingo	Mingo	Mingo	240	320	570	57.0%	PRICPM, JRS	



Cluster Output: The progress of the Cluster

Producto de la Agrupación Sectorial: El progreso de la Agrupación

Coverage – the percentage of the calculated need that has been supplied	Cobertura – porcentaje de la necesidad calculada previamente que ha sido cubierta
--	--

ESC B2 Training Panama June07

Cluster Output: The progress of the Cluster

Producto de la Agrupación Sectorial: El progreso de la Agrupación

Gaps – regions or beneficiaries that may not be being served to the level required	Carencias – Regiones o beneficiarios que tal vez no han sido atendidos al nivel requerido
---	--

ESC B2 Training Panama June07

